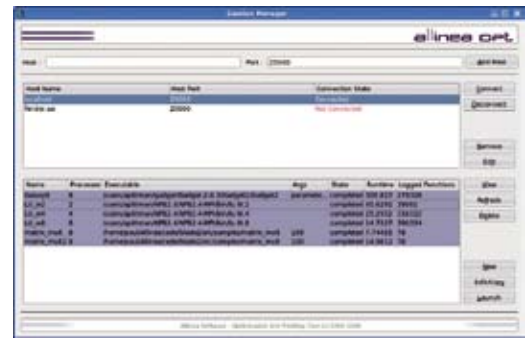


Scalable Versatile Intuitive

- An easy to use and powerful graphical user interface
- Multi-session and multi-user capabilities
- Timeline display with filtering and stack information
- Displays history of MPI calls with information on timing, message sizes and other key parameters
- Selective filtering for efficient profiling
- Fast and highly configurable data analysis
- Access to CPU and PAPI performance statistics, with cache profiling
- No need to instrument your code
- In-depth call-graph analysis highlights communication and computation imbalance as well as waiting processes
- Connect to several profiling sessions and access historical results remotely and securely
- View statistical overviews and detailed views of user-defined metrics; for multiple jobs, across chosen processors and against time
- Configure function measurement and granularity at runtime
- Complete parallel profiling of computation for all functions
- Auto creation of command line jobs
- Metric time view
- Per user job, logging information
- Enhanced batch launch facility
- 'Time Range' widget

COMPATIBILITY

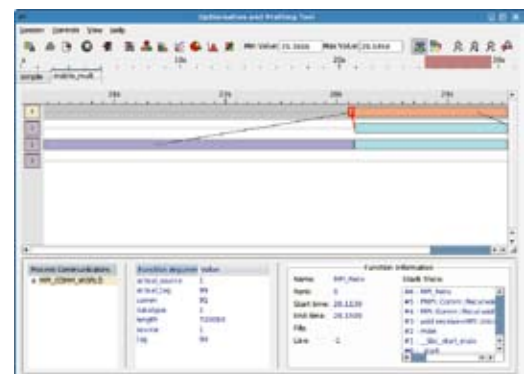
- Available for most Linux distributions
- Support for the latest processors and platforms: X86, X86-64, IA64, Power, IBM Cell BE and Blue Gene/P
- All major MPI implementations
- Compatible with compilers from all major vendors including: Absoft, Intel, Pathscale, Portland Group and the GNU compiler suite



Grid-enabled job control
OPT's web service allows you to connect to remote optimization sessions



Metric Overviews
High-level information provides a first pass at the optimization process



New 'Time Range' widget